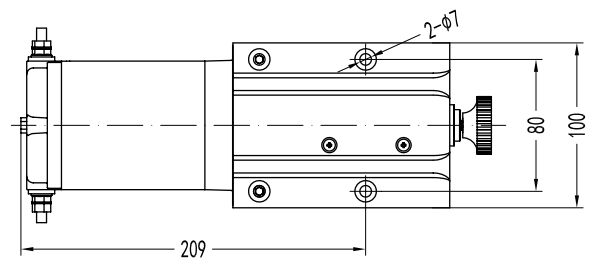
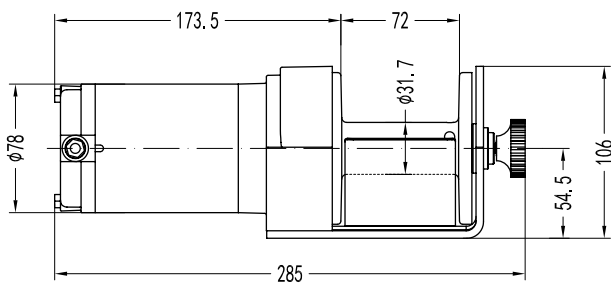


Powerwinch PW2000 12V



Technical data

Part number	PW2000-12V
Rated line pull	907kg
Motor	1.0HP
Relays	None
Gearbox	2-Stage planetary
Transmission	153:1
Brake	Self locking gears, load holding
Wired remote	Included
Wireless remote	Not included
Winch line	Wire cable 4mm x 15.2m
Fairlead	Roller fairlead (for wire cable)
Measurements	L 285mm x W 100mm x H 106mm
Weight including wire cable	6.25kg

Performance data

Load KG	0	228	454	681	907
Rope winding speed 12V - mpm	4.10	3.28	2.60	2.20	1.12
Operation amperage 12V - ampere	12	33	60	85	110
Rope winding speed 24V- mpm	-	-	-	-	-
Operation amperage 24V - ampere	-	-	-	-	-
Layer	1	2	3	4	5
Pulling capacity for respective layers	907	740	620	540	470
The cumulative rope length on the drum	2.00	4.30	7.20	10.60	14.40

Spare parts

Number	Part	Quantity
1	Motor	1
2	Stage of planetary gear	1
3	Internal gear disc	1
4	Transmission lid	1
5	M4 x 12 gearbox lid screws	4
6	Graphite-nylon flange	1
7	Drive Shaft	1
8	Flexible 3 x 11 pin	1
9	Spline shaft	1
10	Spring	1
11	Drum	1
12	M5 rope bolt	1

Number	Part	Quantity
13	Drum bearing	1
14	Flanged M5 nut	2
15	Rope clamp	1
16	Winch base	1
17	Clutch lever	1
18	M5 x 10 conical screw	2
19	Allen screw M6 x 16	2
20	Steel rope	1
21	Roller guide	1
22	Remote control	1
23	Clevis hook	1
24	Handsaver	1

